



www.giscloud.com / www.jal.jalgeotech.com info@geojal.com.om



OMAN
GEOSPATIAL
FORUM

10-11 APRIL, 2017

Oman Convention Centre
Muscat, Oman

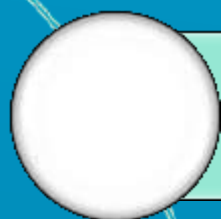
THEME: GEOSMART EMPOWERING ECONOMIC DEVELOPMENT

Eng. Fuad AlShannaq-GIS/SDI Expert –+96895528585

COLLABORATIVE MAPPING
with GIS Cloud
powers your daily workflow



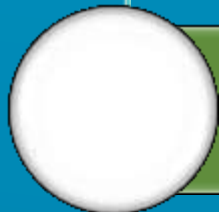
Agenda



Technology : the core of GIS



GIS Cloud Technology Concept & Benefits



Facts & Use Cases



Q & A

SUPPORT BUSINESS REQUIREMENT

Data

- location

transform

- information

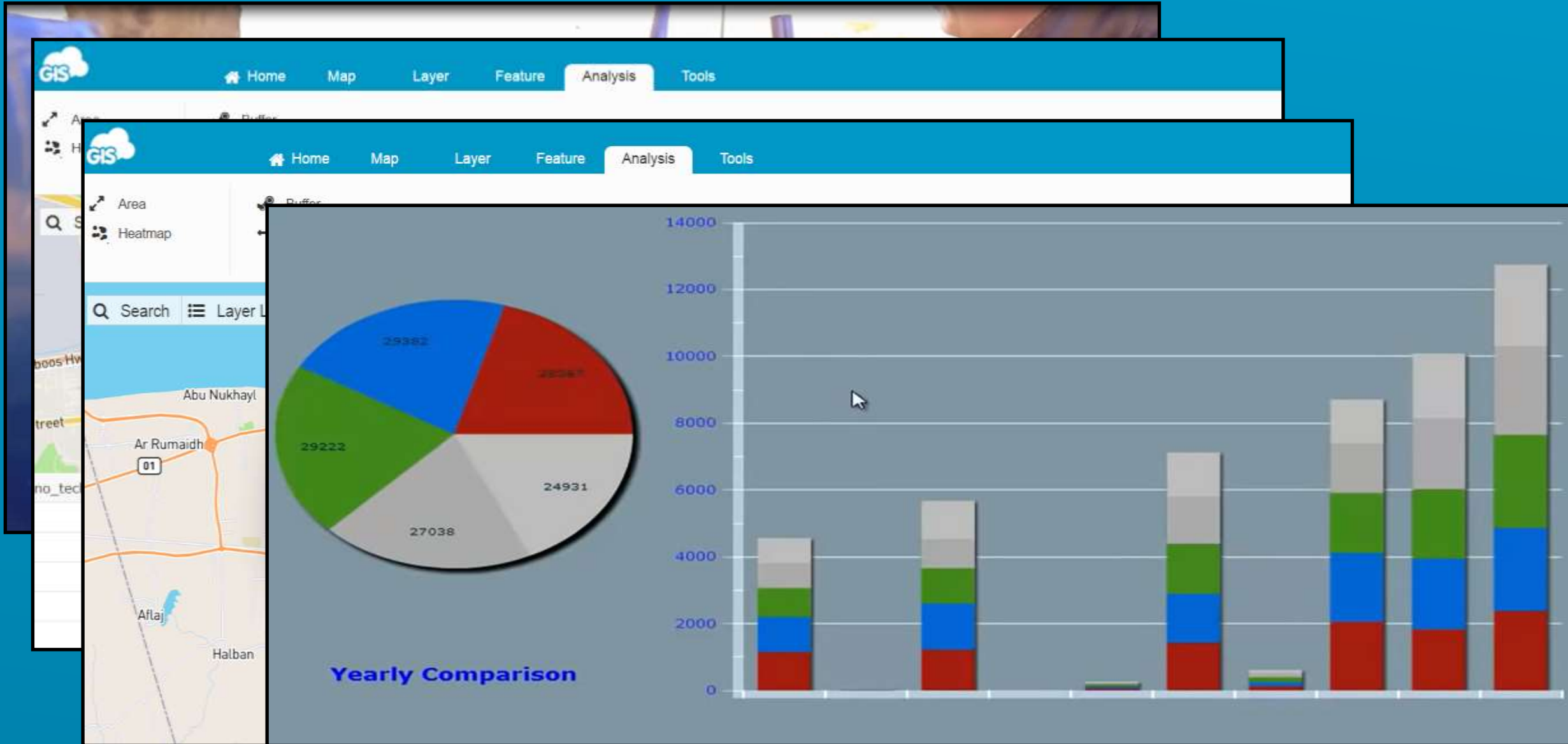
Decision

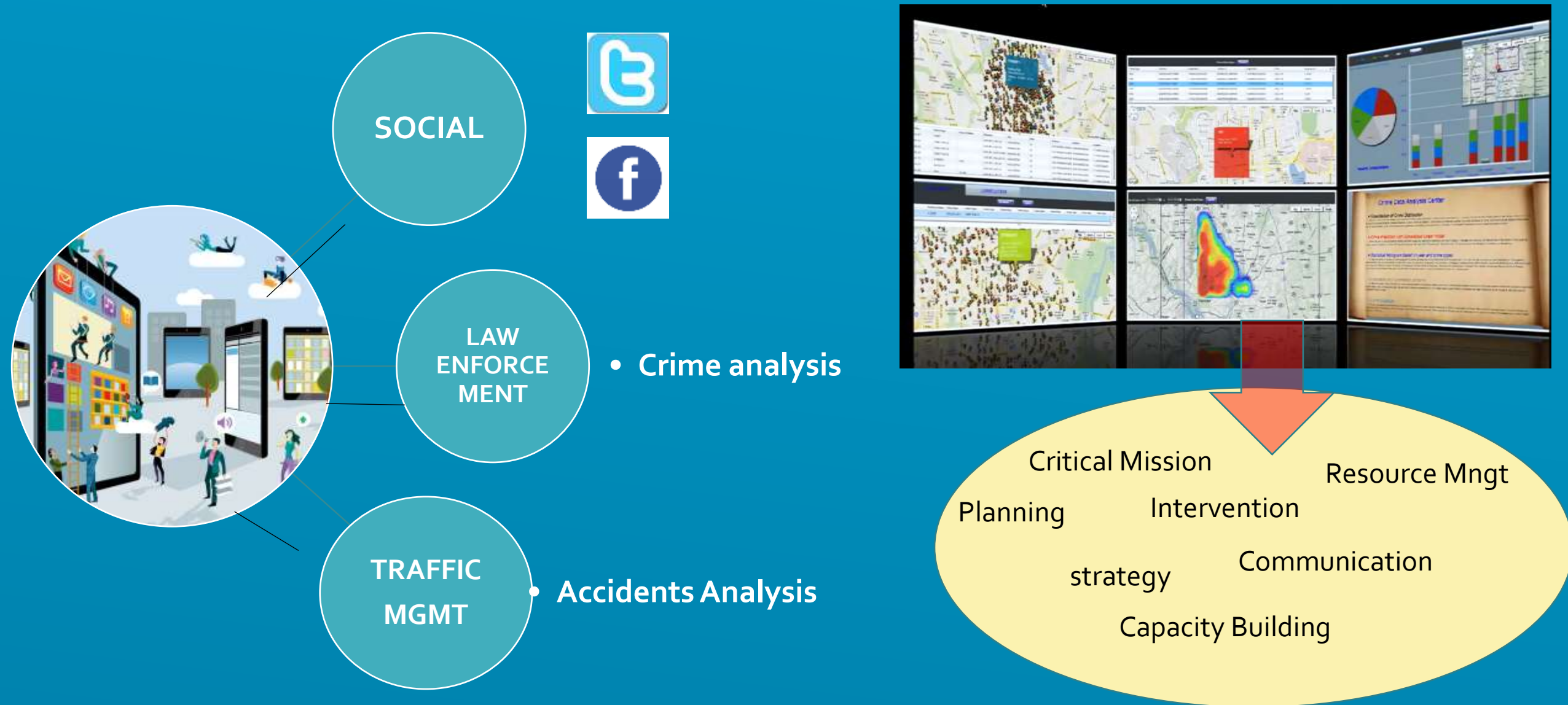
- Knowledge



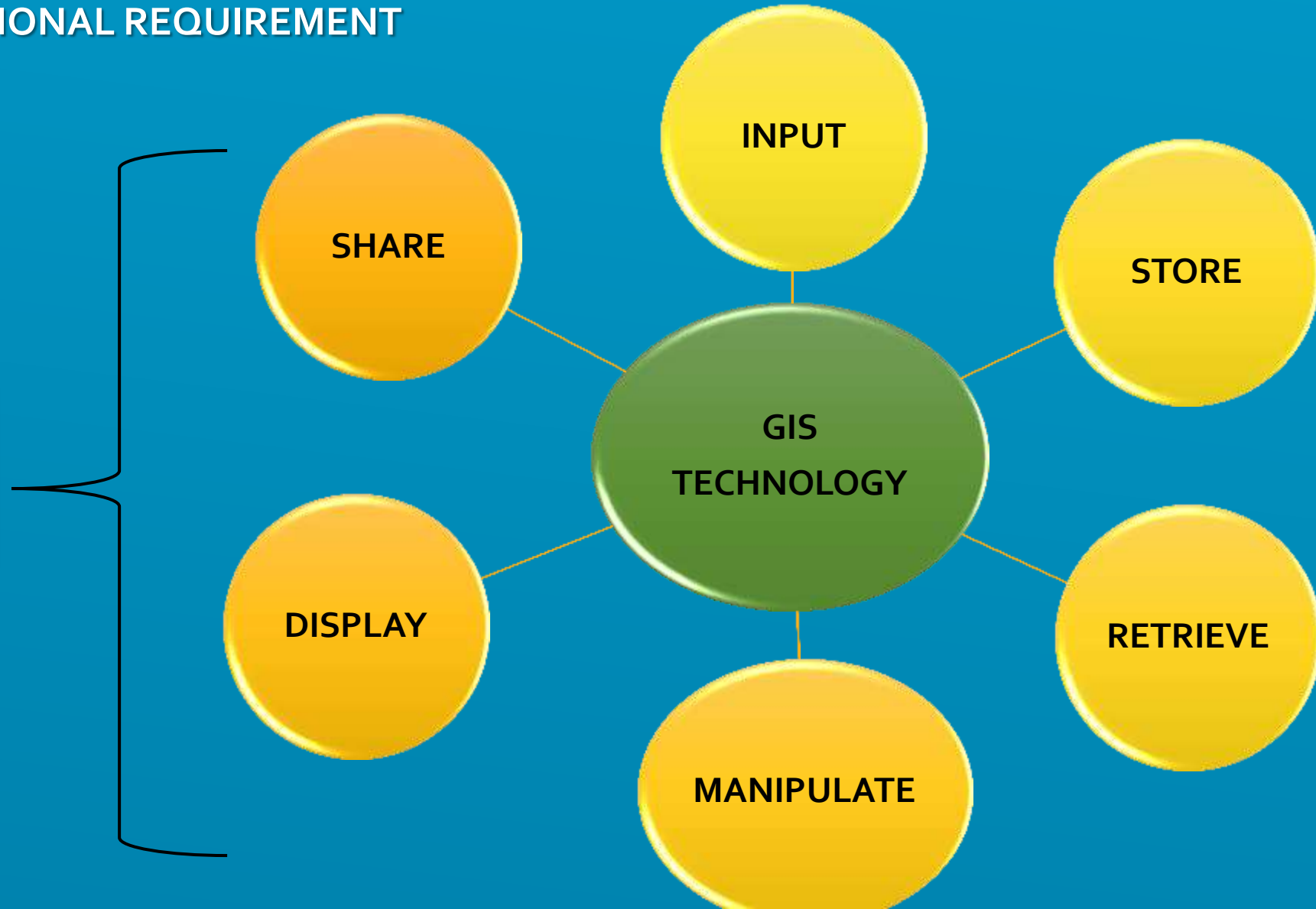
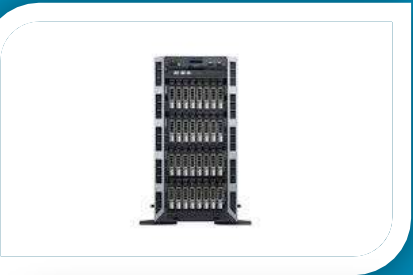
SUPPORT BUSINESS REQUIREMENT





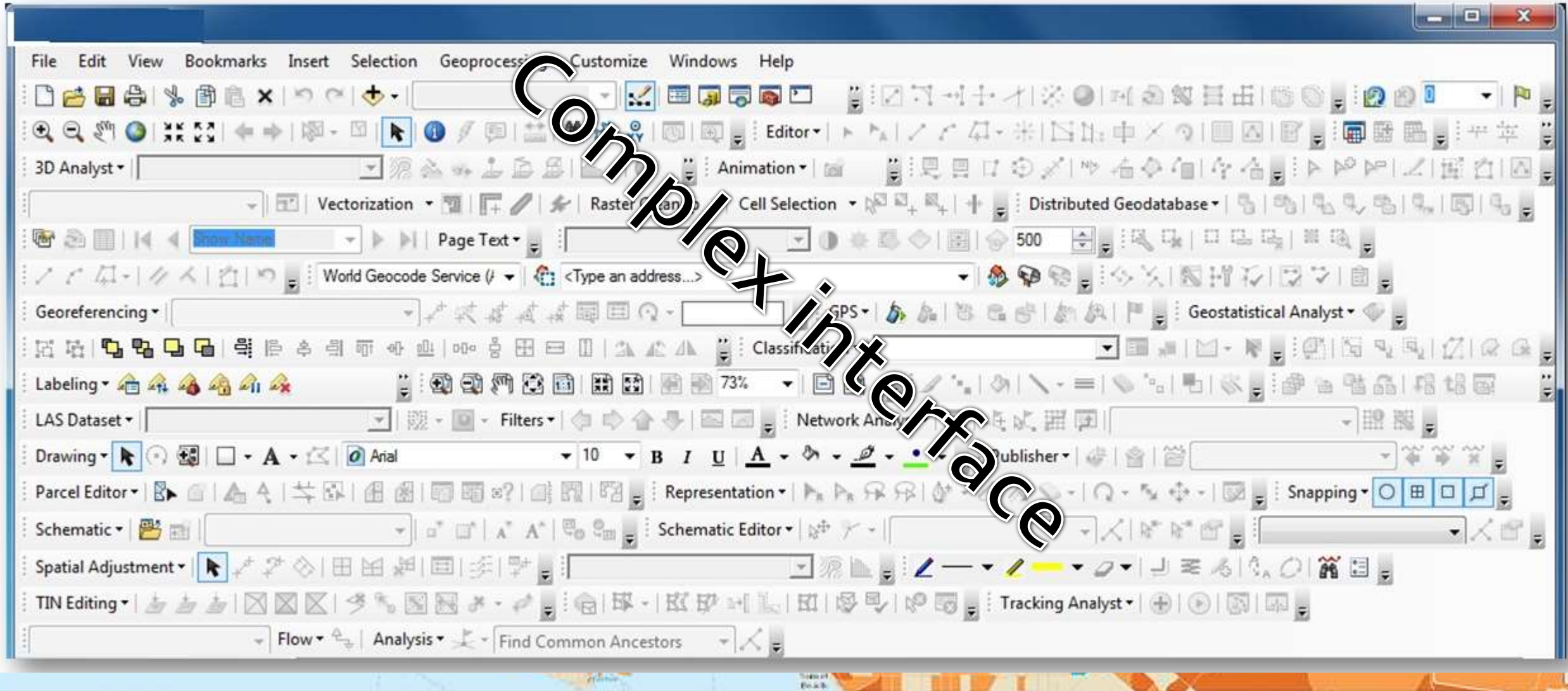


SUPPORT FUNCTIONAL REQUIREMENT





www.giscloud.com / www.jal.jalgeotech.com info@geojal.com.om





Required skilled people



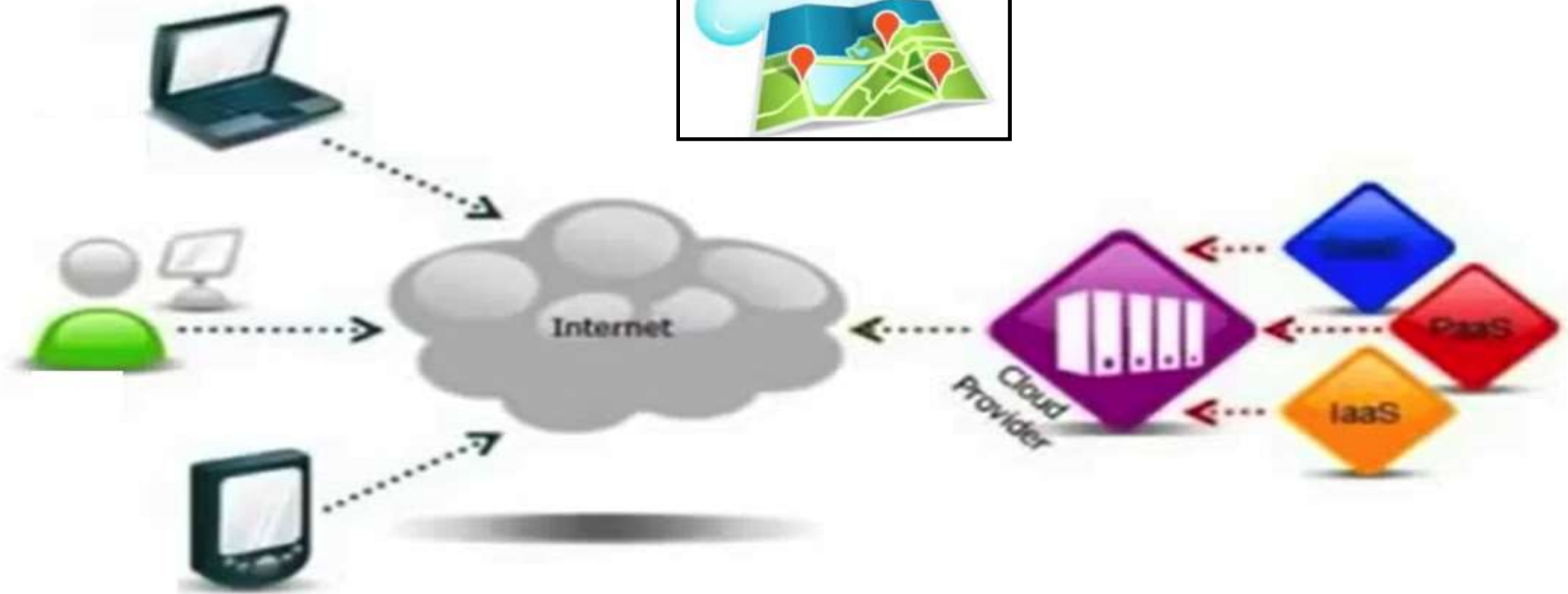
Silo like working environment



High dependency on GIS pro



Very high cost





Collaborative Mapping

Real-time mapping platform for the
entire workflow of your organization.

It works online & on-premises.

MOBILE DATA COLLECTION

Collect data and report from the field



EDITOR

Manage data and your teams as you go



GIS Cloud solution

VIEWER

Work with accurate information in real time



MAP PORTAL

Easy two-way Communication with your community



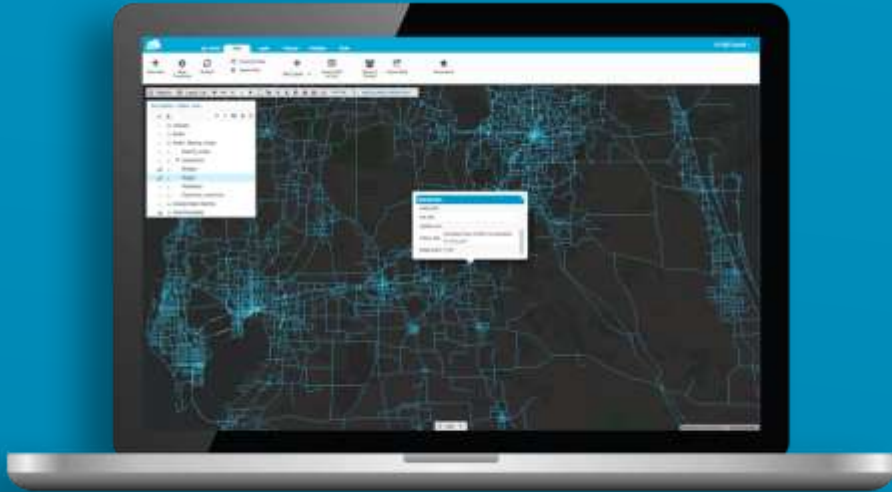


“Data Access for All” Solution

Goal: information delivery and two-way communication

Challenges: locked disparate and non-standard data

Result: “one map multiple apps” principle, everything in one place, no duplicates



Map Editor



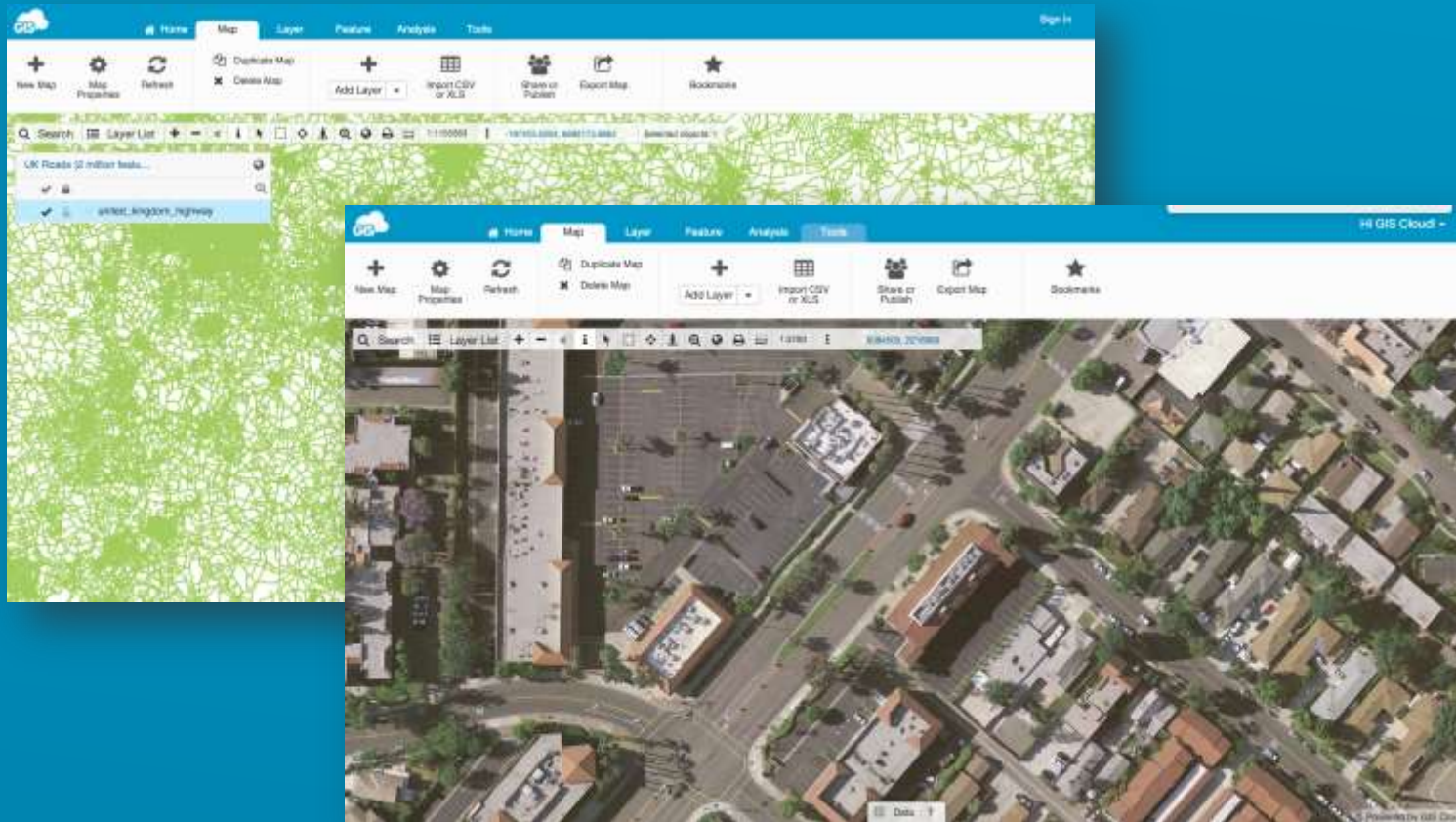
GIS SPECIALISTS, NON-
GIS DEPARTMENTS,
PROJECT MANAGERS,
DECISION MAKERS

Central Data Infrastructure

- **Insure** the exchange of most of the data locally and centrally
- **Mitigate** the divide among areas and communities
- **Introduce** standard methods, rules and data models on all levels



The Fastest Map Engine



Confirmed by our users who tested all major cloud solutions!

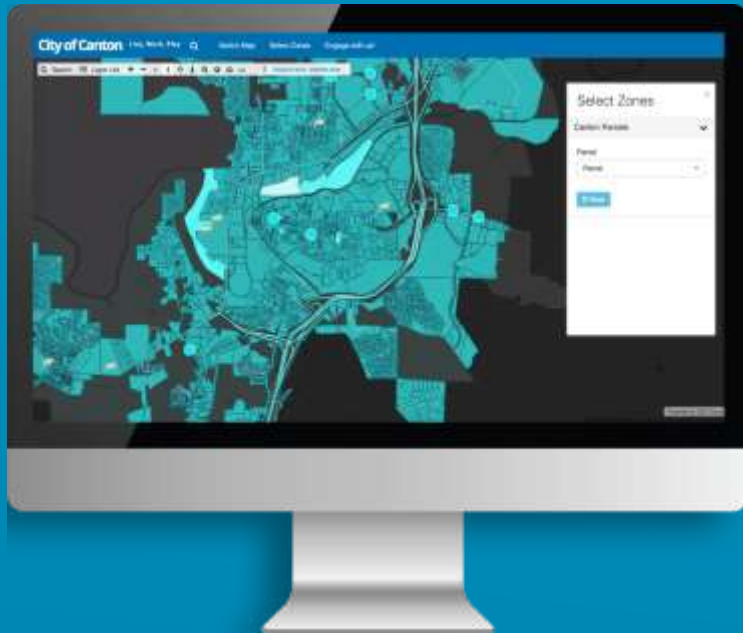
Mobile Data Collection-MDC



Design Form by Business
No Coding
NO EXPERIENCE
Fast Deployment
Real time collaboration
Low BUDGETING



Crowdsourcing Solution



GEOPORTAL

1. **Admins** – custom forms, statistics, reports
2. **Citizens**– reports issues
3. **Field workers** – collect, respond, assignments



COMMUNITY

Benefits

Deploy and
Collect Faster

Data Quality
Control

Media
Enriched

Real Time
Information

Price

Do more with
the data!



www.giscloud.com / www.jal.jalgeotech.com info@geojal.com.om



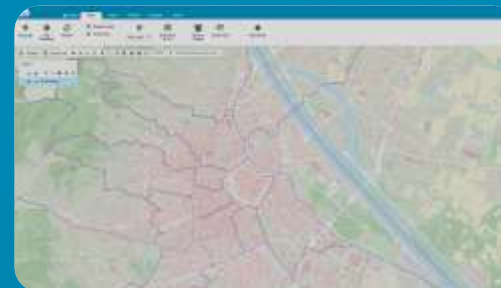
Design and Develop ONE for MANY

FOR ALL DEVICES



FOR ALL USERS

ALL USAGE



G-Gov (Geo Enabled) Services

1. Developed for services where Spatial component is mandatory (disaster and emergency management, water control and monitoring, fisheries, forestry, settlements).
2. Natural evolution of E-Gov services – providing the **where** of your data

Citizens

Businesses

Employees

Government

connecting people



Field Workers



Decision Makers



Engineers & Managers



Community



www.giscloud.com / www.jal.jalgeotech.com info@geojal.com.om



Facts & Figures

90,000
users

All
Continents

800
customers

Partners
Worldwide



Use Cases -Examples

Road Infrastructure Solution



Mobile Data Collection

1. Location and condition of all road assets
2. Inspection and Maintenance schedule
3. Progress of all ongoing road works
4. Planned future projects and budgeting
5. Contractor hiring and progress
6. Permissions and Analysis
7. ...



FIELD WORKERS

Utilities

Smithville, Holly Springs, Pipe View

Challenge : **lack of information about ongoing public works, pipe/sewer/pole type and condition, coverage and overall quality; future plans, maintenance cost evaluation, contractor hiring and monitoring**



Solution : **Mobile Data Collection, Map Editor/Viewer, Map Portal**

Benefit : **complete and accurate info about needed repairs, maintenance cost, covered areas and planned projects, exact info about contractor reimbursement and future projects**



www.giscloud.com / www.jal.jalgeotech.com info@geojal.com.om



Orange County, California

The image displays a GIS application interface with multiple layers and data sources. The main window shows a map of Orange County, California, with various layers visible in the Layer List on the left. The layers include:

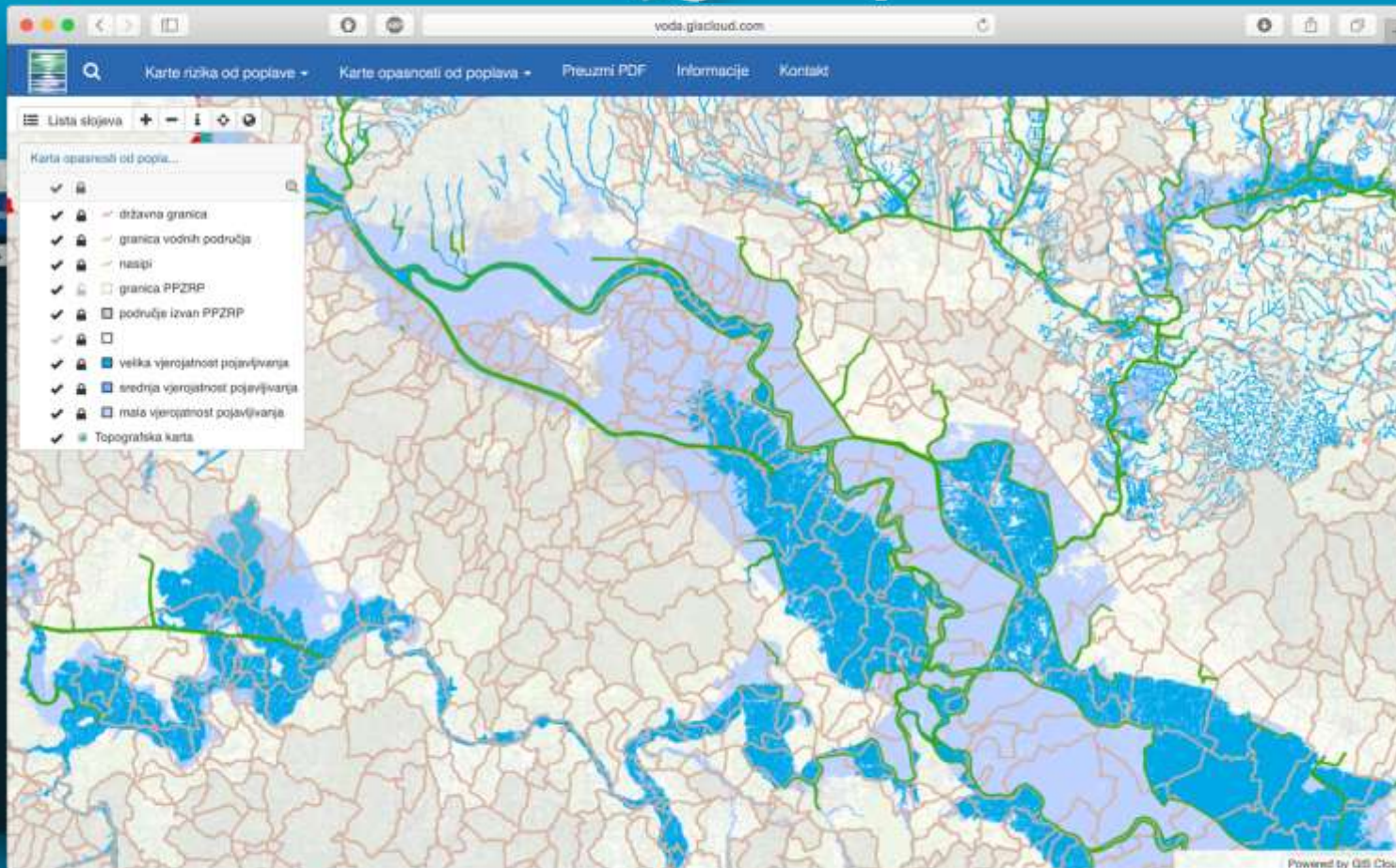
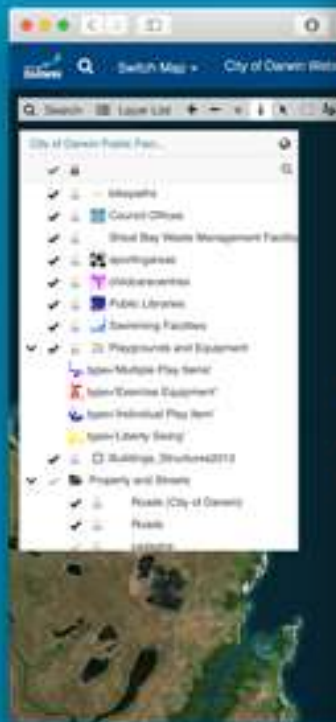
- Hydrologic Data
 - Realtime Data
 - ALERT Rainfall
 - ALERT Windspeed
 - ALERT Water Level
 - Historical Data
 - Non ALERT Precipitation Series
 - Basemaps
 - OC Watersheds
 - Bing Maps
 - Bing Maps Satellite

The right side of the interface shows a web portal for the Treasurer-Tax Collector of Orange County, California. The portal includes a search bar, a list of services (Online Payments, Agency Billing, Investments, Property Tax, Info & Contact Us, Financial Reports, Statistics, How Do I), and a section for Pay/Review Property Taxes or View Tax Bill Information on a GIS Map. The search results show a list of property tax bills for the year 2016, with a table of results:

Parcel Number	Tax Year	Roll Type	Status
112-753-18	2016	Secured	PAID

Information is current as of 12/09/2016.

City of Amsterdam Croatian Water Agency



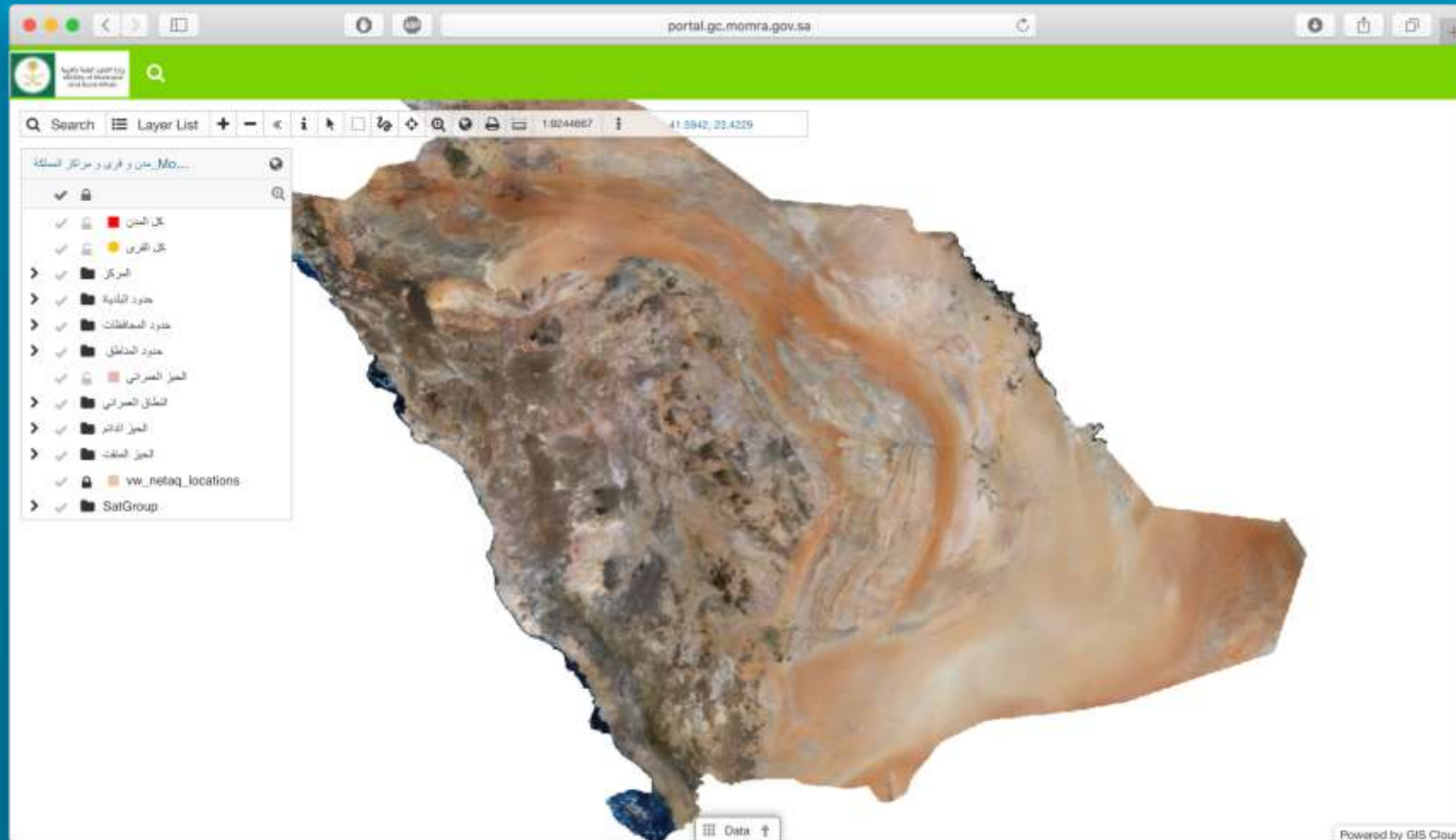
Challenge :

Give Clean Water, Liberia

- time-consuming paperwork,



Ministry of Municipal and Rural Affairs, SA



Diwan of Royal Court, Office for Conservation of the Environment





www.giscloud.com / www.jal.jalgeotech.com info@geojal.com.om



Thank You

Q&A