

SPATIAL REFERENCE FRAMEWORKS POWER MODERN COUNTRIES

Carsten Rönsdorf
Head of Advisory Services
OS International



Ordnance Survey

We have been mapping Great Britain since 1791

Our data underpins £100 billion of Great Britain's economy

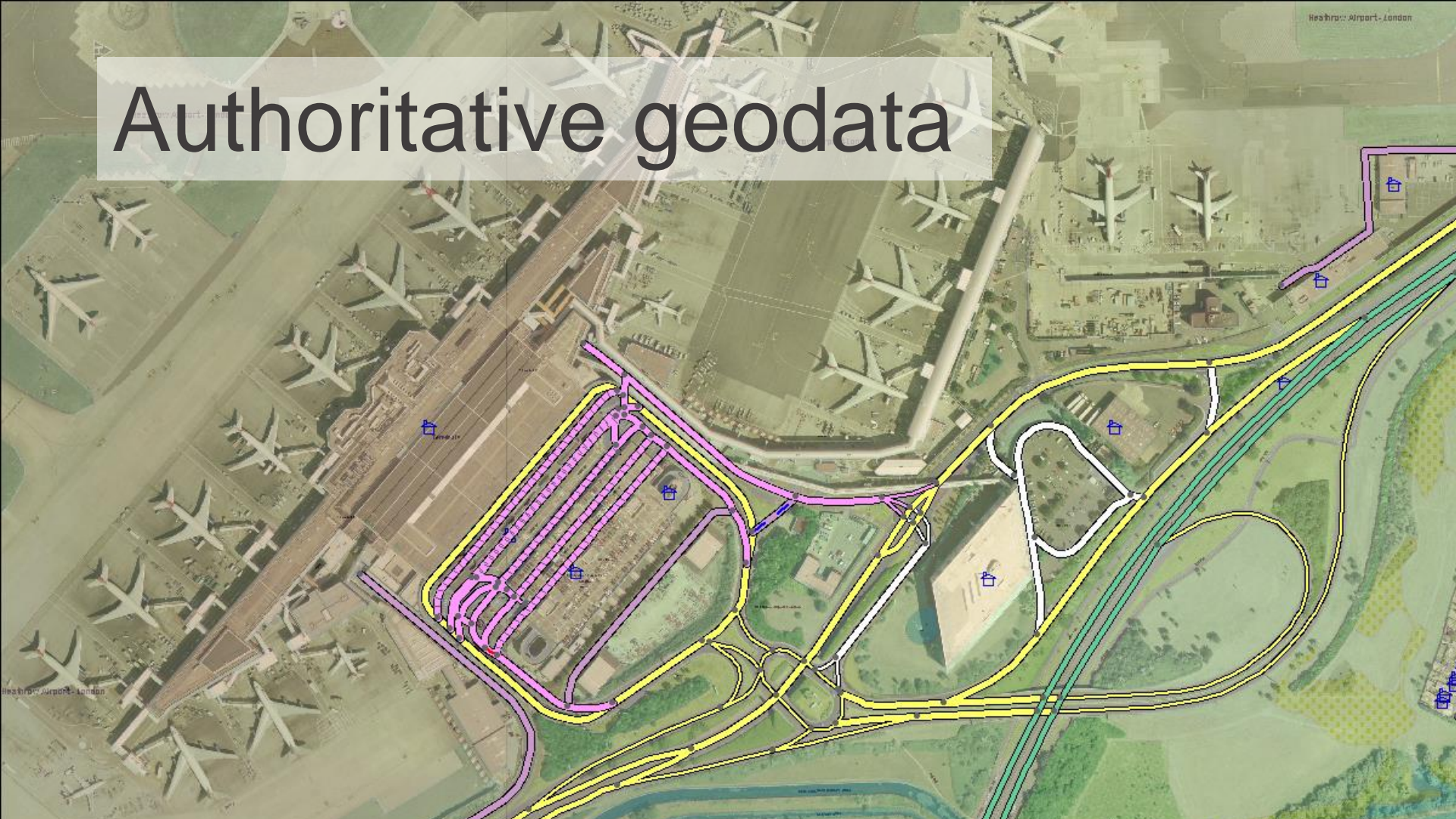
We help Great Britain generate £400 million in new revenues every year

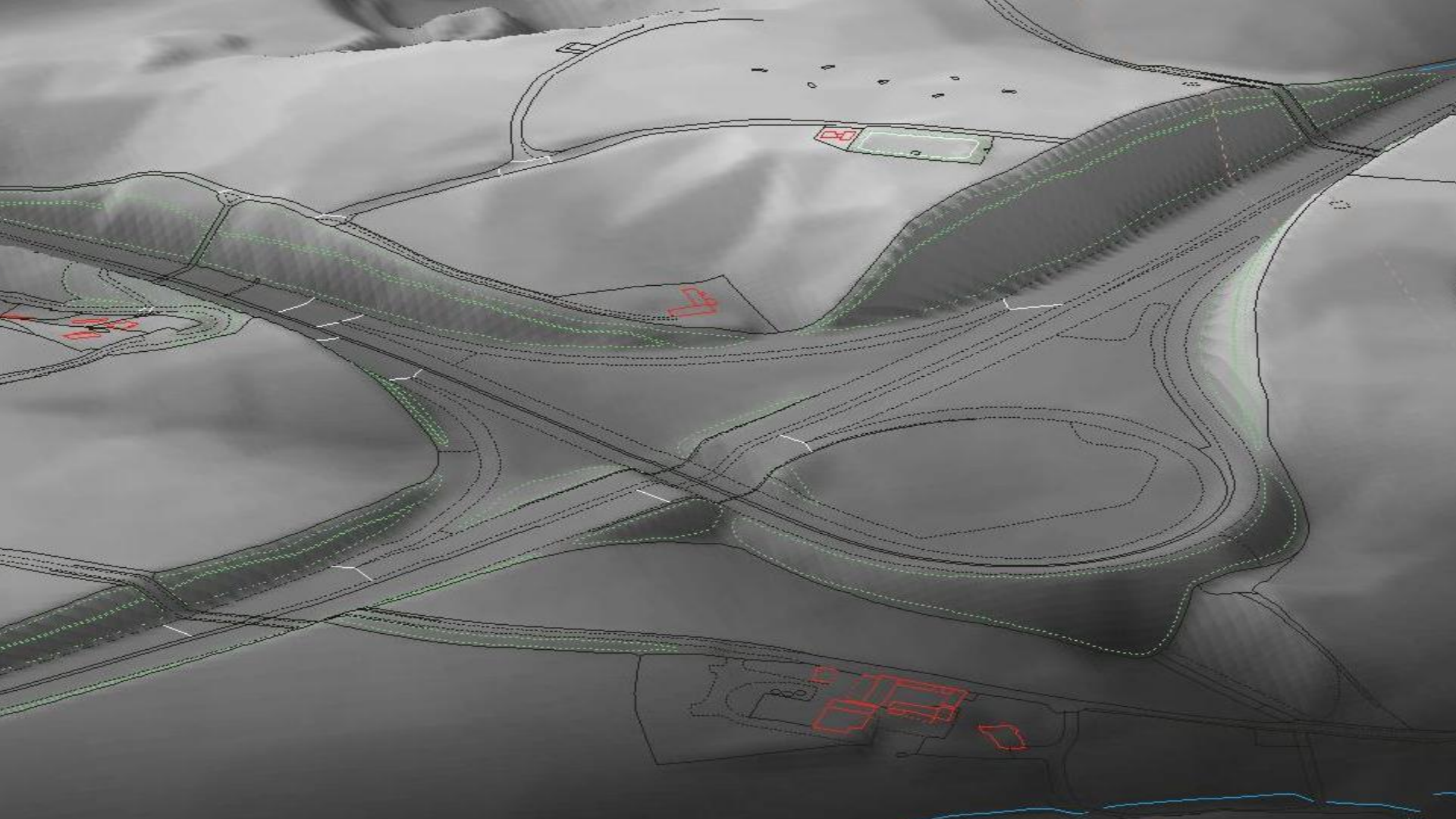
10,000 mapping updates every day

Over 3,500 Public Sector organisations using our data

Who we are

Authoritative geodata





Details

Basemap

Share

Print

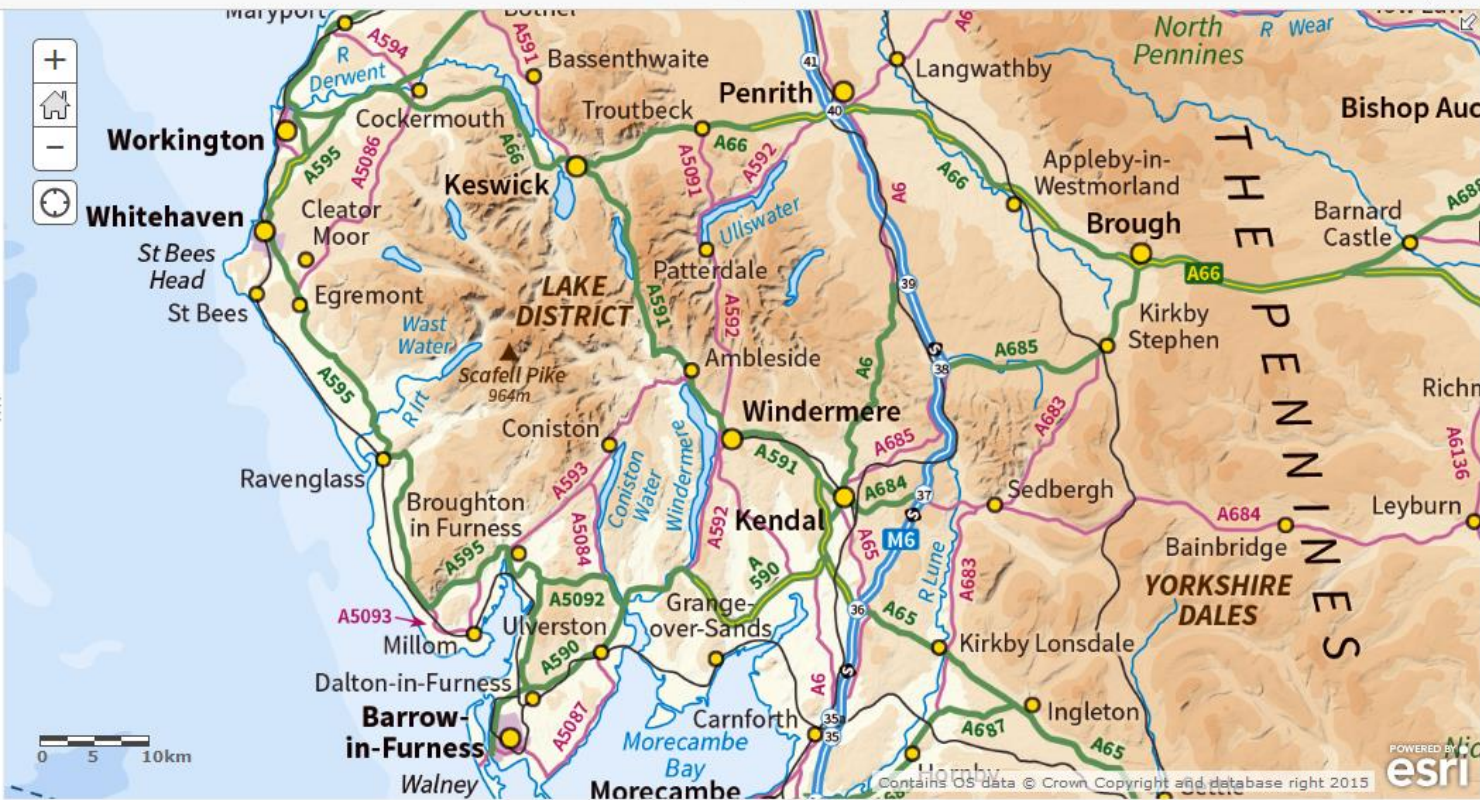
Measure

Find address or place

About Content Legend

Legend

No legend



Esri.com Help Terms of Use Privacy Contact Esri Report Abuse

Contains OS data © Crown Copyright and database right 2015



Oman Geospatial Forum, 23 November 2015

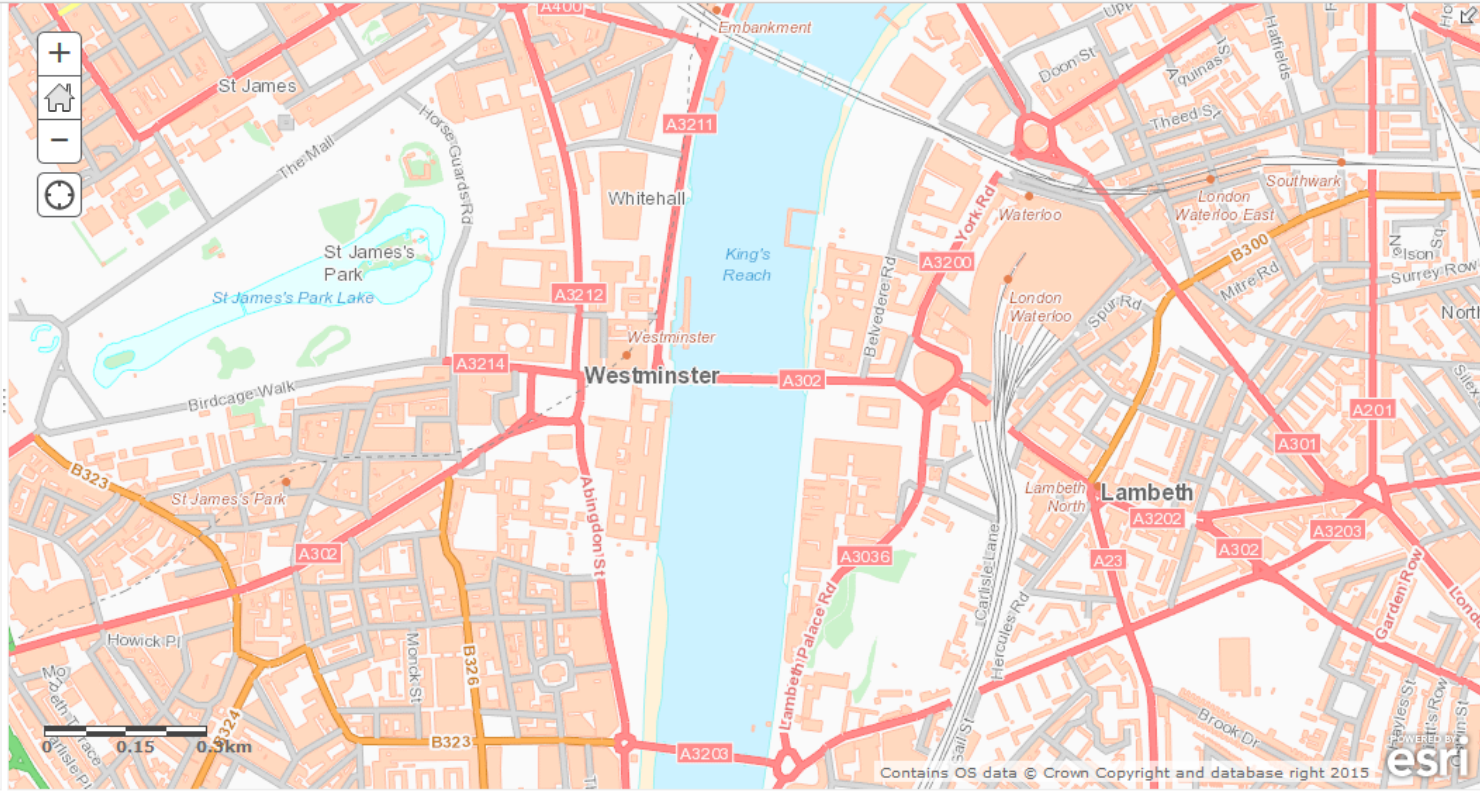
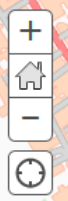
[Details](#) | [Basemap](#)

Share Print Measure

[About](#) [Content](#) [Legend](#)

Legend

No legend



[Esri.com](#) · [Help](#) · [Terms of Use](#) · [Privacy](#) · [Contact](#)
[Esri](#) · [Report Abuse](#)

Contains OS data © Crown Copyright and database right 2015

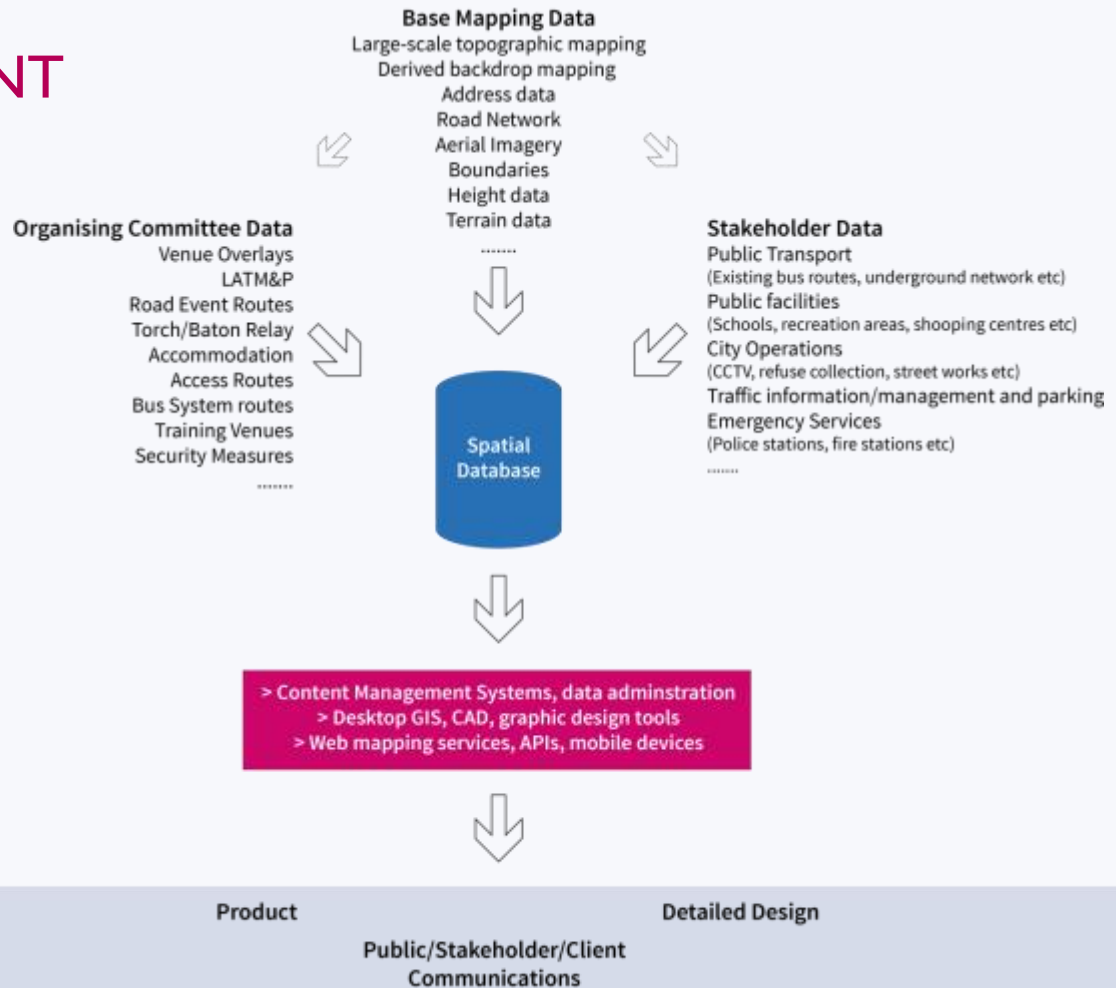


Oman Geospatial Forum, 23 November 2015





DATA MANAGEMENT



LONDON 2012: WORKING COLLABORATIVELY ACROSS GOVERNMENT: OVER 30 GOVERNMENT STAKEHOLDERS



INTEROPERABILITY NEEDS STANDARDS

5th strategic member of OGC

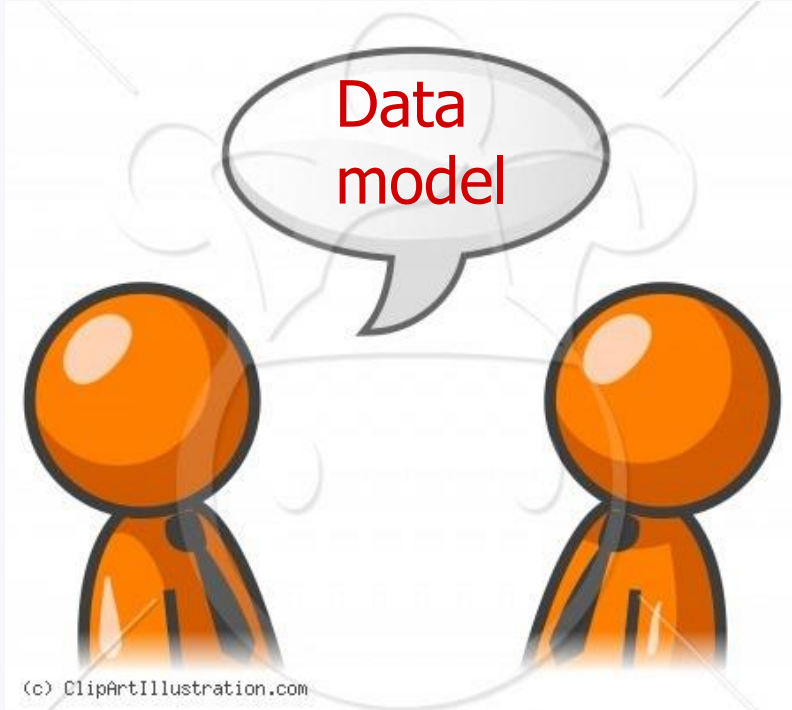
Only strategic member outside USA



Ordnance
Survey

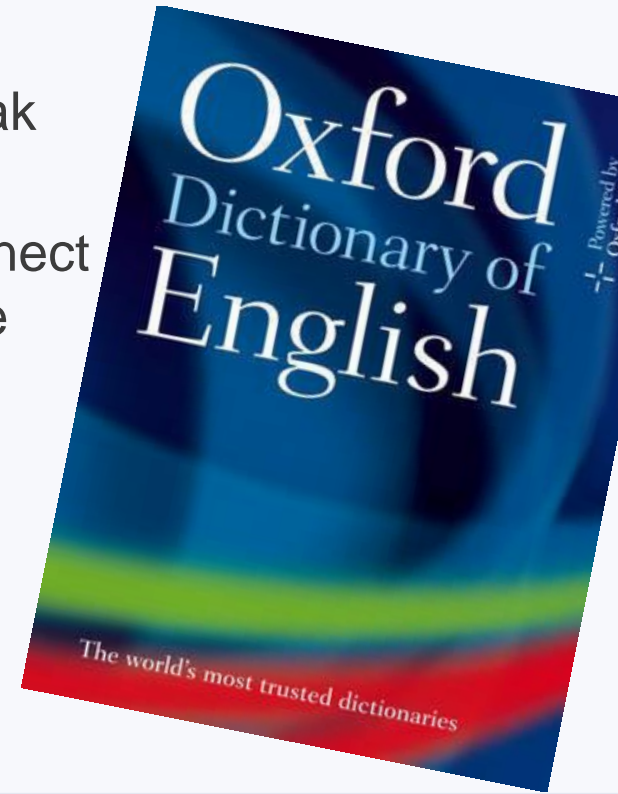


OPEN STANDARDS BASED DATA MODEL



Language to speak
about location
To be able to connect
and collaborate

OGC[®]
Making location count.



CITYGML—LEVEL OF DETAIL

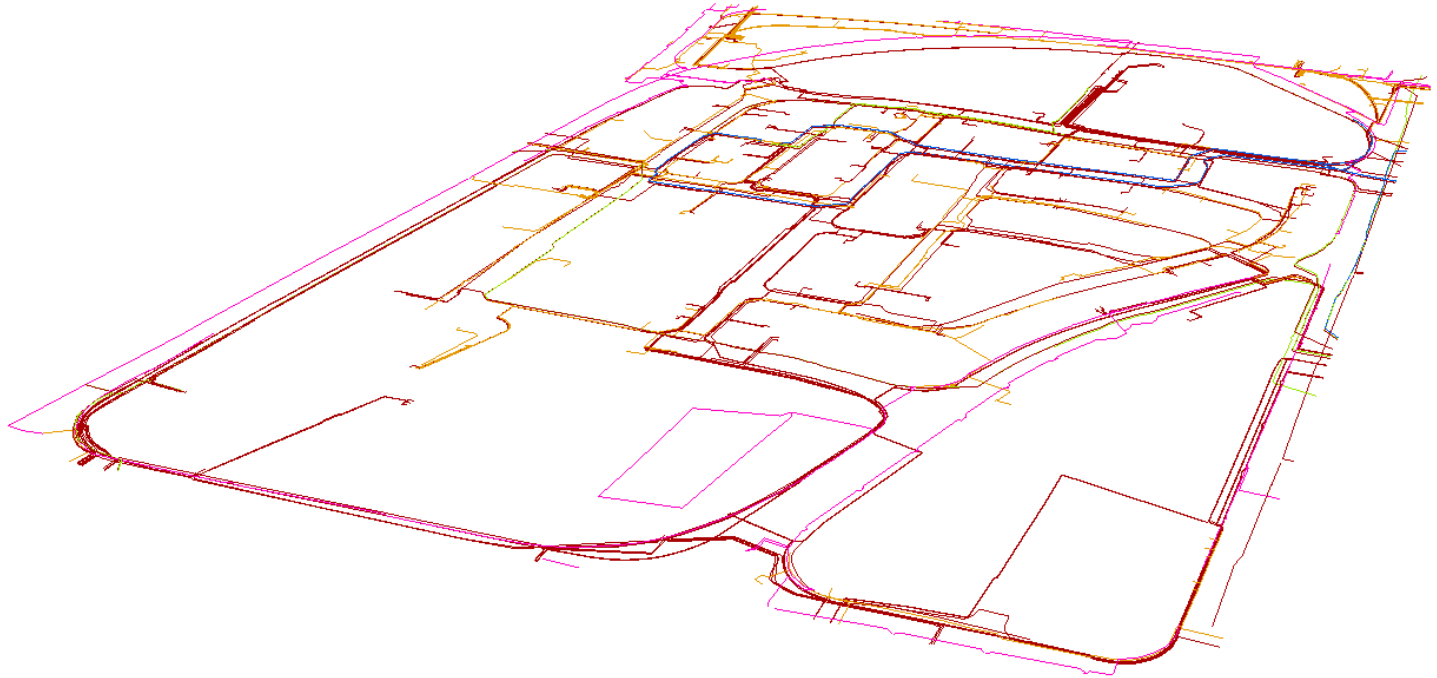


2D DATA

RC34.UTILITIES_CABLE

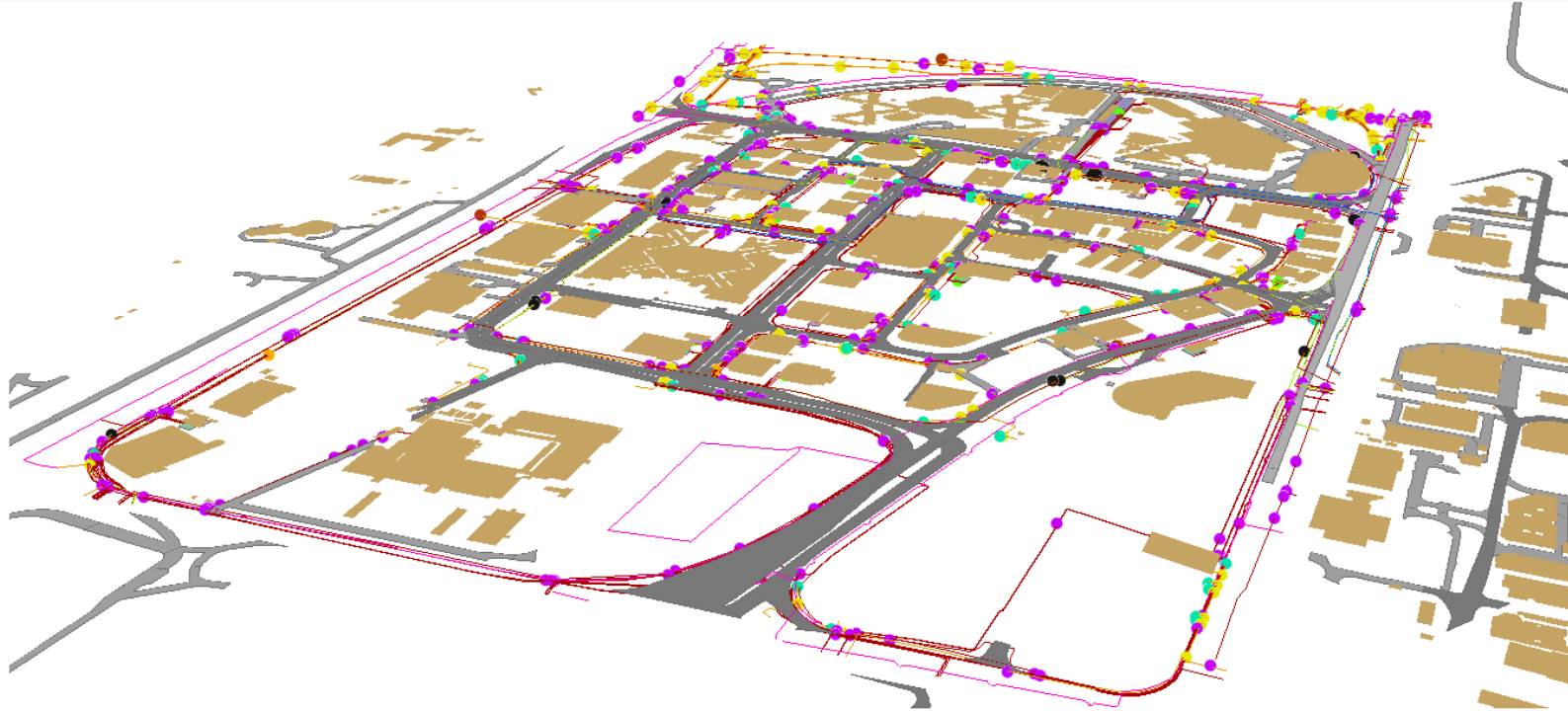
CLASS

- fibreOpticCable
- highVoltage
- lowVoltage
- pilotCable
- streetLight

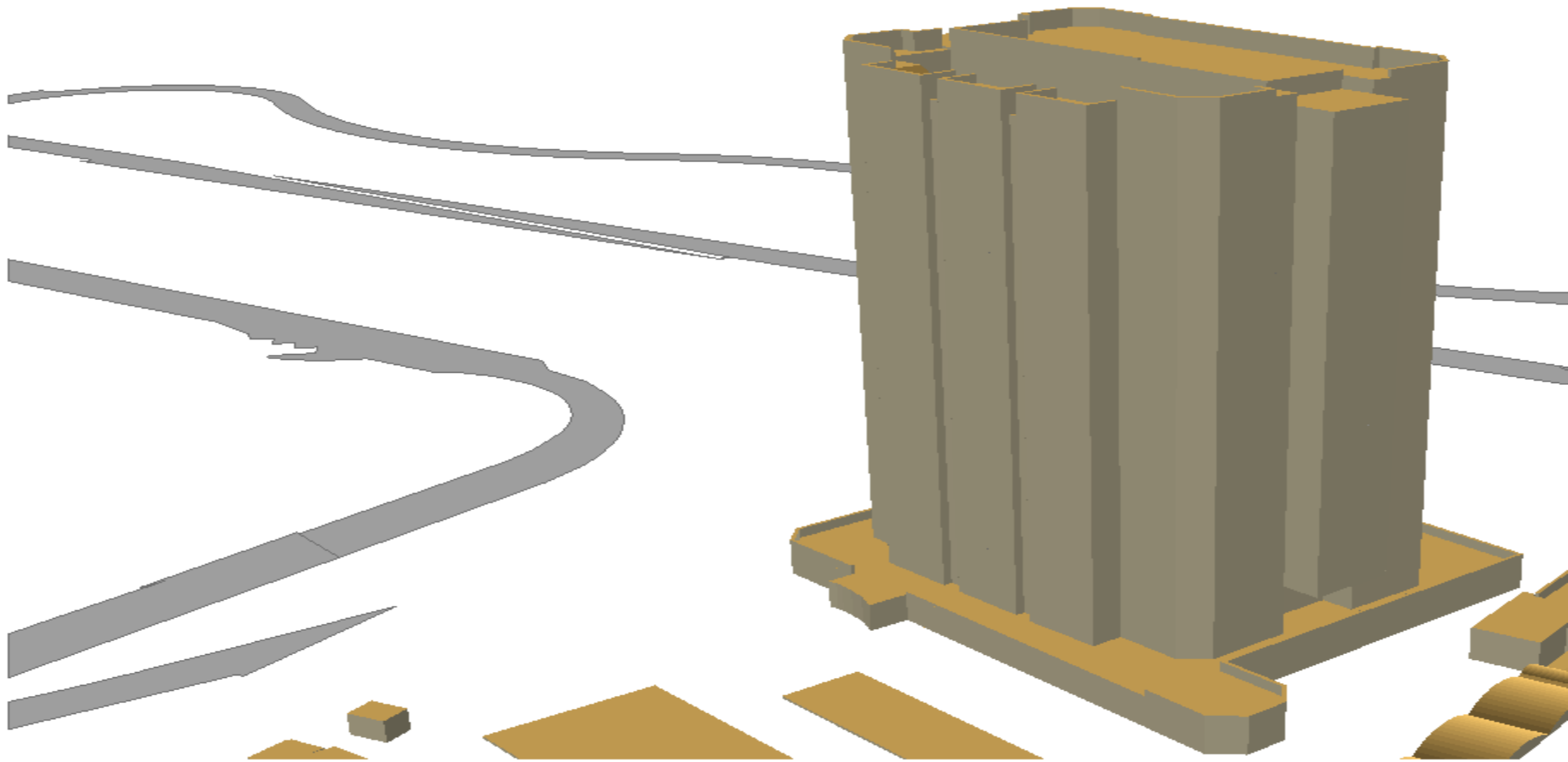


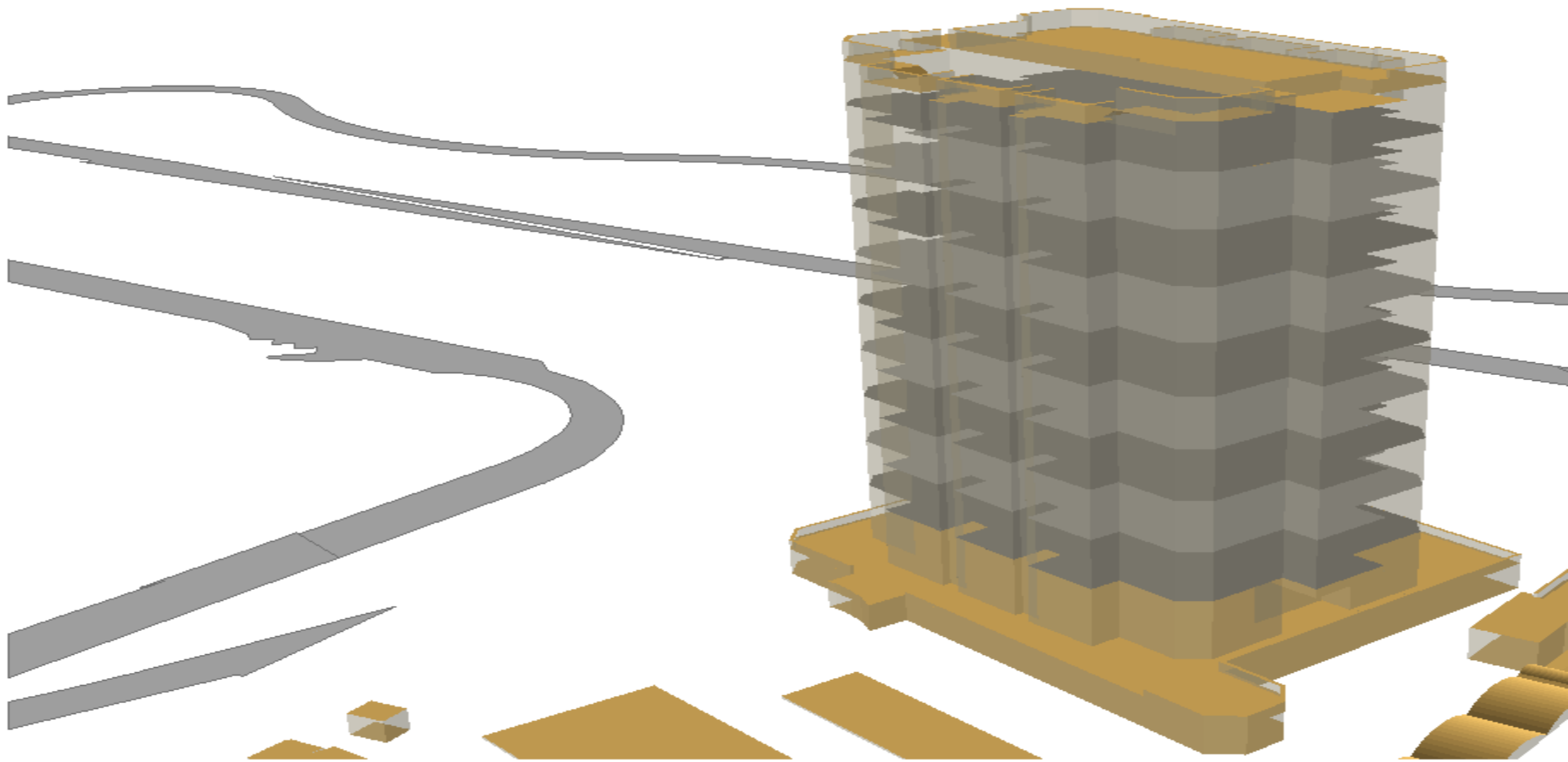
DATA SHARING

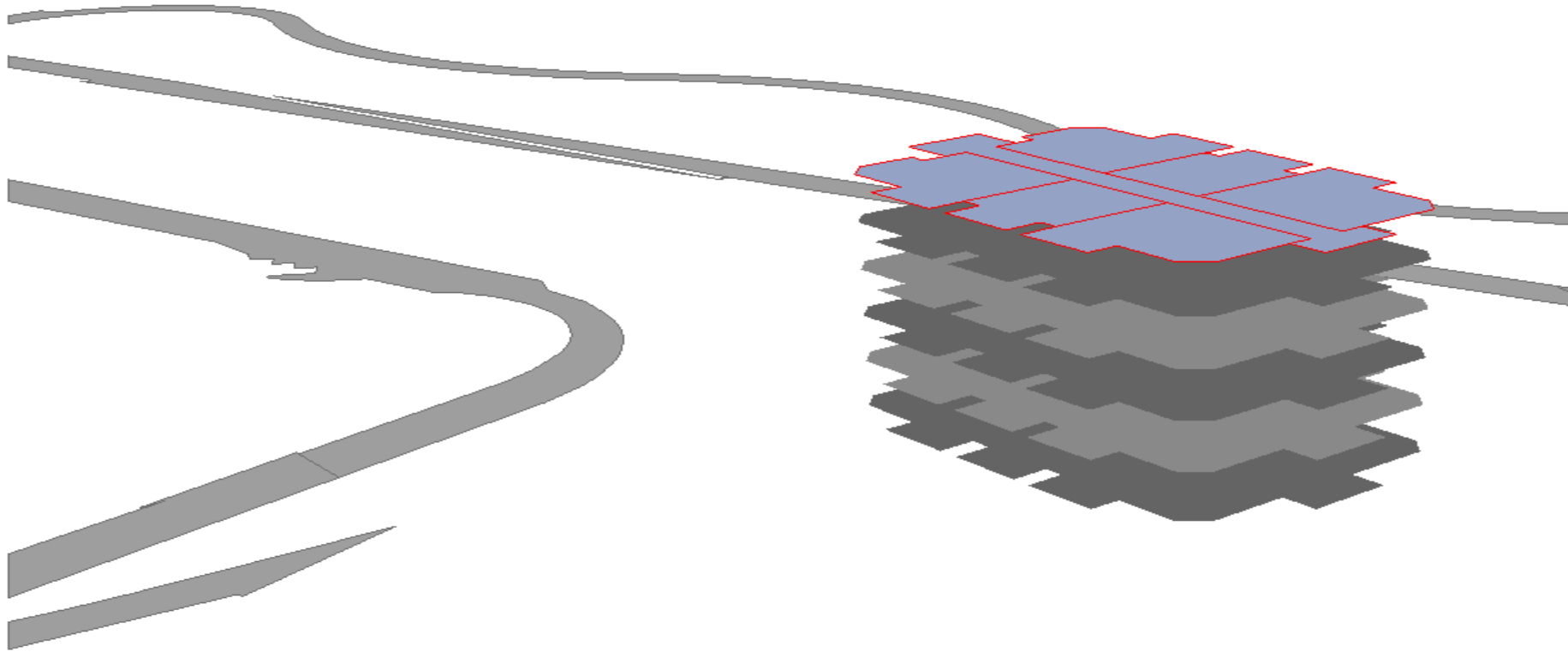
- RC34.UTILITIES_CABLE
 - CLASS
 - fibreOpticCable
 - highVoltage
 - lowVoltage
 - pilotCable
 - streetLight
- RC35.UTILITIES_JOINTTERMINATION
 - CLASS
 - <Null>
 - capEnd
 - lowVoltageTJoint
 - newTermination
 - potEnd
 - straightJoint
 - virtualBackToBackStraightJoint
- RC35.UTILITIES_SUBSTATION
 - CLASS
 - buildingPackageUnit
 - buildingSubstation
 - freeBuilding
 - freeBuildingAlcoType
 - intakeSubstation
 - packageUnit
 - primarySubstation
- RC35.ROAD
 - ROADCLASS
 - <Null>
 - Road_Other_Road
 - Road_Road
- RC35.GROUNDSURFACE
 - CLASS
 - freeBuilding



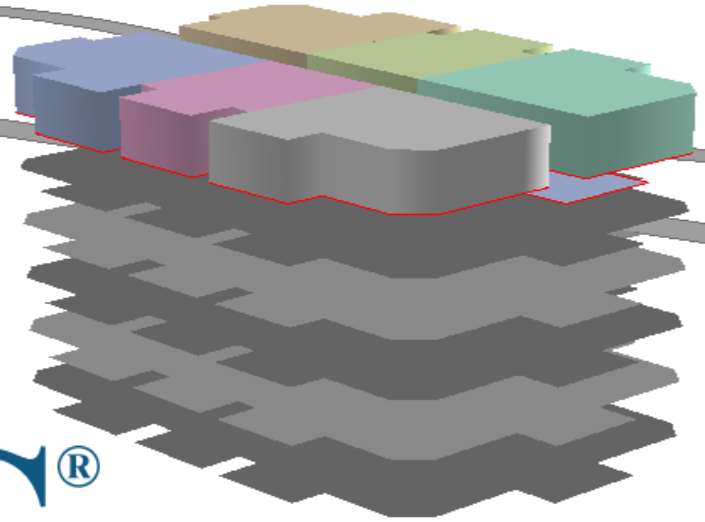
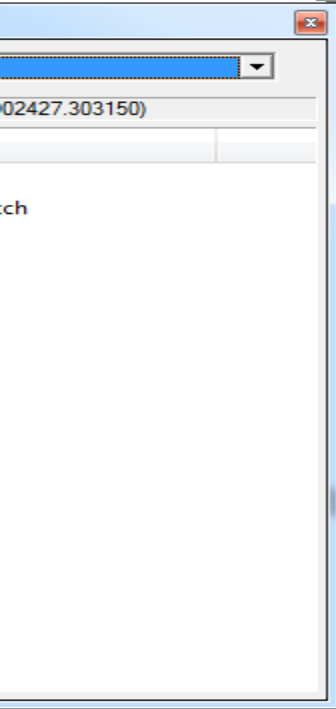








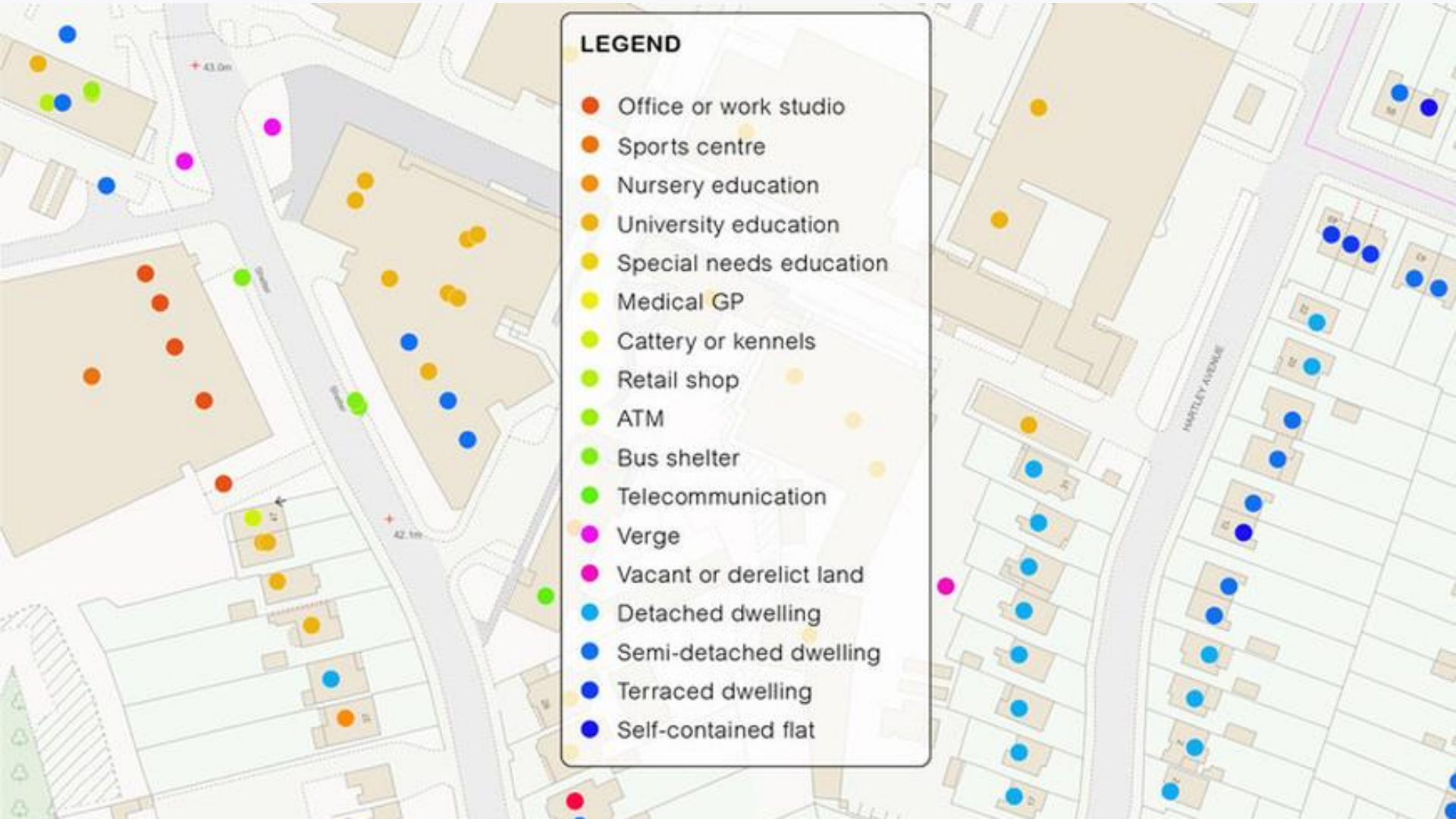
OGC smart cities pilot



OGC[®]
Making location count.

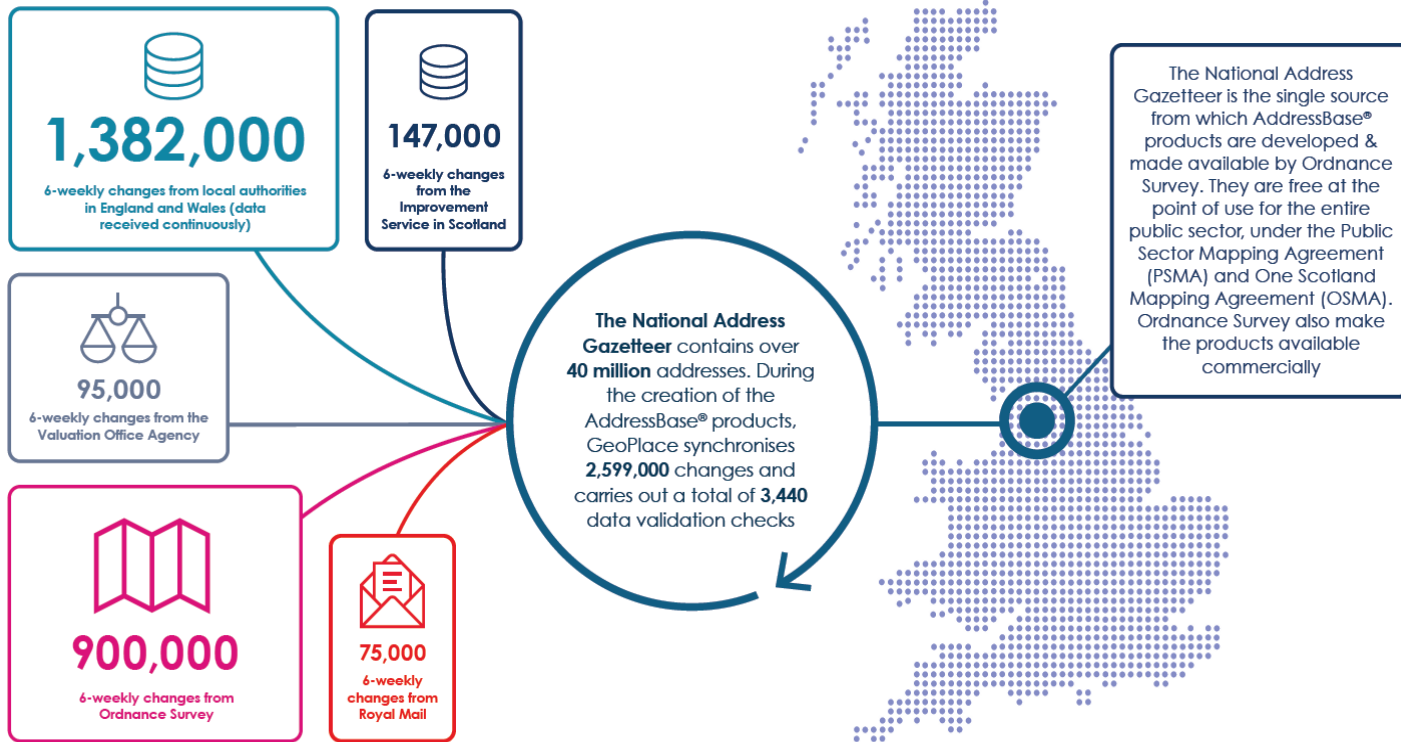
LEGEND

- Office or work studio
- Sports centre
- Nursery education
- University education
- Special needs education
- Medical GP
- Cattery or kennels
- Retail shop
- ATM
- Bus shelter
- Telecommunication
- Verge
- Vacant or derelict land
- Detached dwelling
- Semi-detached dwelling
- Terraced dwelling
- Self-contained flat



Data sources and change intelligence for the National Address Gazetteer infrastructure

GeoPlace: managing the definitive index of addresses and streets for Great Britain



UPPR

HOW LOCAL AUTHORITIES USE THE UPRN



SERVICE DELIVERY



Public Sector:

- Blue light services
- Environmental health
- Planning
- Voting
- Taxation
- Conveyancing

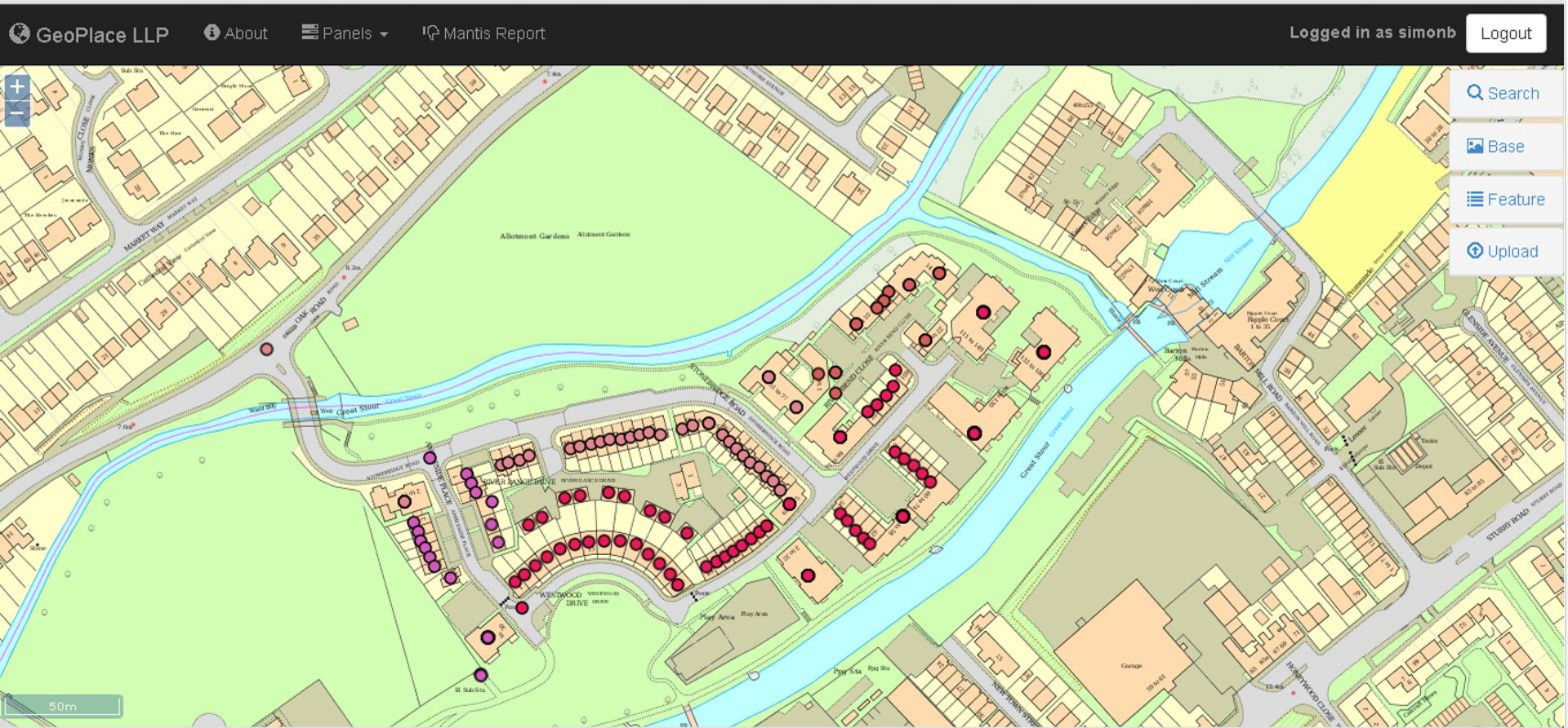


Private Sector:

- E-commerce fulfilment
- Insurance & banking
- Utility connections
- Asset management



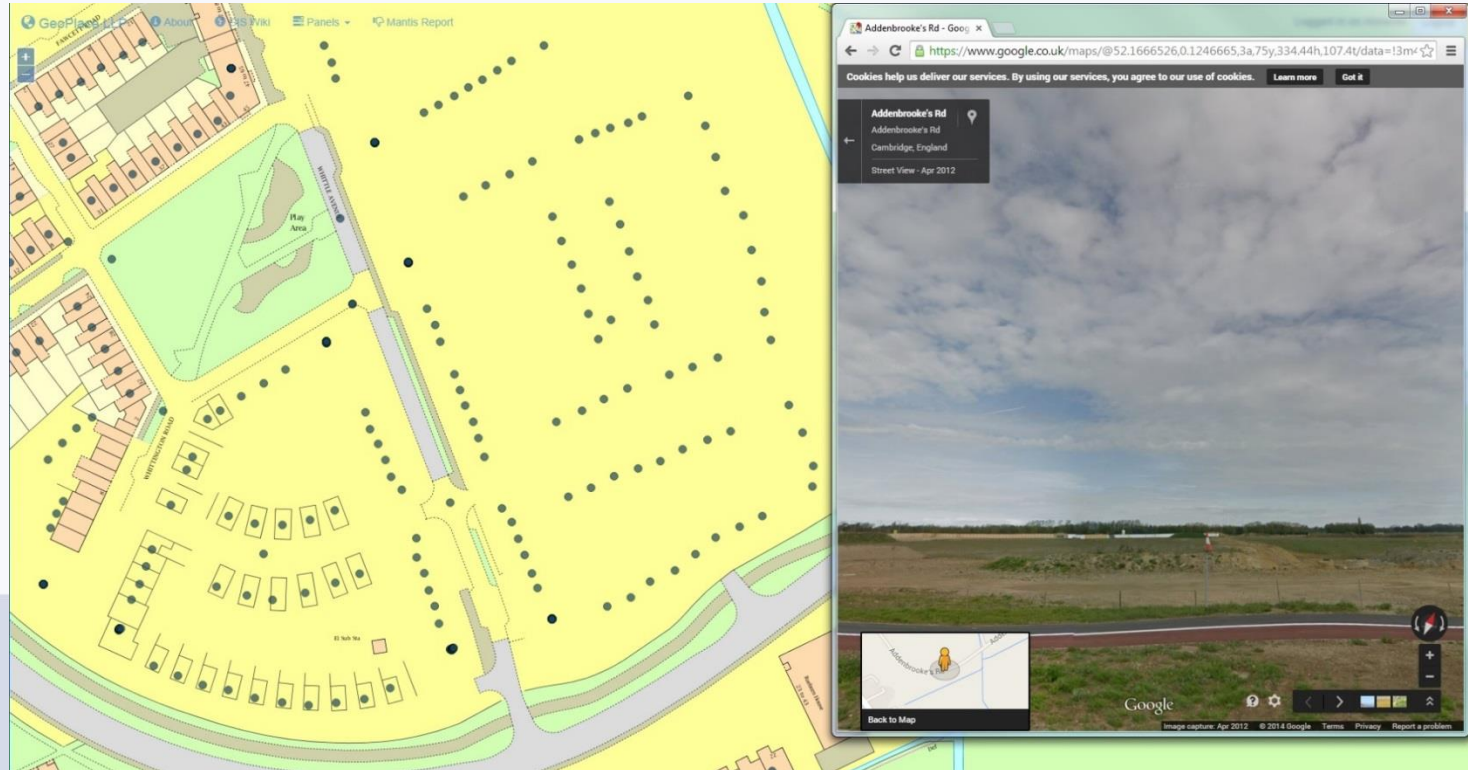
DATA ANALYSIS – SIMPLE VISUALISATION (COUNCIL TAX BAND)



SYNCHRONISE DATA FROM DIFFERENT PROVIDERS

51, SOUTHWELL DRIVE, CAMBRIDGE, CB2 9AS (LS:6, LANG:ENG, KEY:0505L999994373, CF:N, LUD:2013-12-06)

PARCEL 18 PLOT 272, CLAY FARM DEVELOPMENT SITE, LONG ROAD, CAMBRIDGE, CB2 9AS (LS:8, LANG:ENG, KEY:0505L999994373, CF:N, LUD:2013-12-06)





Savings obtained	Type of improvement	Source
£150,000pa	Using NLPG for back-office linkage and corporate IT applications.	Plymouth City Council
£250,000	Using UPRN to verify address data on green waste collection service	Shepway District Council
£155,000pa	Using NLPG matched to the VOA list to collect more property tax	Huntingdonshire District Council
£20,000pa	Using the NLPG to optimise refuse collection routes (plus subsequently £110,000pa saving of one vehicle)	Teignbridge Borough Council
£350,000pa	Using the NLPG and NSG to rationalise school transport over 4,500kms of roads	East Riding of Yorkshire Council
£250,000pa	Improved public information handling and notifications using elements of the NLPG	Blackpool Council



Savings made by using Ordnance Survey PSMA data...



East Riding of Yorkshire saves **£1,000,000** on school transport.



Harrow Council's waste project saves **£3,200,000** over 10 years.



Automated bus pass allocation project saves Liverpool **£50,000**.



Gloucestershire County Council saves **£2,000,000** on tendered bus services.



The Suffolk Waste Partnership saves St. Edmundsbury District Council **£180,000**.



North Somerset District Council saves **£690,000** on school transport.



Lee Valley Regional Park Authority saves **£100,000** on grounds maintenance.



From 2002, London Borough of Sutton saves **£30,000** yearly on SEN transport.

HOW WE CAN HELP

1. Strategy and policy

2. Technical capacity and
capability

3. Organisational efficiency

4. NMCA/CMA lifecycle
development

Geospatial enables better solutions for



Tourism



Safety and Resilience



Urban infra



Mobility



Health



Environment

Opportunities for geospatial data and technology



**Sharing data,
Having high quality geospatial data,
Including a maintained Address database**

Can power a modern nation

and geo-enable

Oman